

MORRIS



10

SERIES

WE GROW BETTER CROPS



Take Your Operation to the Next Level.



The 10 Series air cart is designed to optimise the number of hectares our customers seed each day.

This air cart series is loaded with Australian customer-inspired ideas and technology to minimise the time spent on seeding and filling operations and to maximise the number of hectares planted for each tank fill.

The 10 Series air cart exemplifies quality with a number of premium components and materials to provide years of low-maintenance, trouble-free service.

Morris knows the pressure farmers are under when seeding crops in a narrow window of time and designed the 10 Series to ease this burden.

Seed With Confidence.



LOAD CELLS UNDER EACH TANK

Be confident about product weight going in and out of each granular tank.

DYNAMIC CALIBRATION

Spend less time calibrating. Use calibration correction to maximise seeding efficiency.



**Less Time Filling.
More Time Seeding.**



CONVEY-ALL CONVEYOR

This single belt conveyor with a low profile hopper fills tanks rapidly (3,800L/min) and features a stainless steel top and bottom to keep this machine looking good for years. A 10-way remote control is used for conveyor movement and speed.



Agronomically Superior by Design.

MAXIMISE HECTARES PER FILL

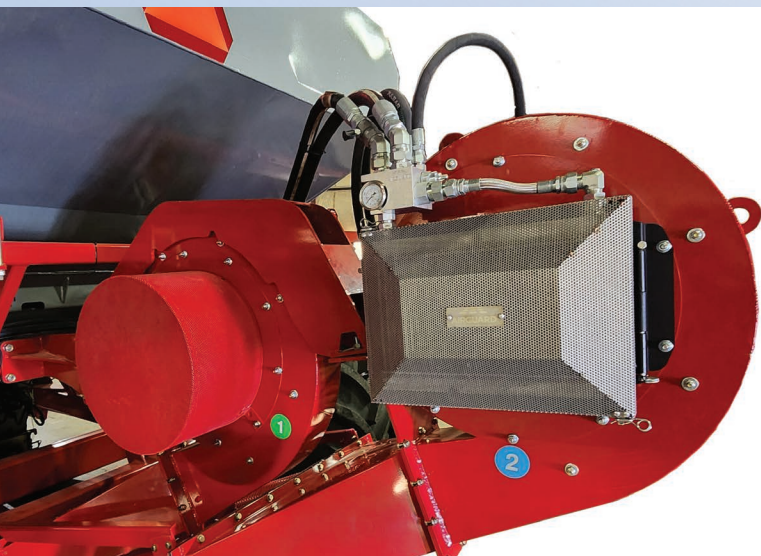
Tanks are sized to empty at the same time by applying agronomic principles and established nutrient uptake ratios.

OPTIMIZER TANK (SMALL SEEDS)

This tank will hold two bulker bags of canola and can be used to optimise the hectares per fill when seeding other crops.

10 series 740L model					
CROP	OPTIMIZER (2,819 L)	TANK 2 (11,628 L)	TANK 3 (8,500 L)	TANK 4 (11,628 L)	MAXIMUM HECTARES/FILL
	HECTARES/FILL				
wheat @ 60 kg/ha		156			142
UAN @ 60 L/ha			142		
fertiliser @ 100 kg/ha	29			117	
barley @ 60 kg/ha		127			127
UAN @ 60 L/ha			142		
fertiliser @ 100 kg/ha	29			117	

Assumptions: Some products use more than one tank to maximise hectares/fill (e.g. Optimizer tank + Tank 4 is 29 +117 = 146 hectares/fill).
Bulk densities: wheat= 0.8, barley=0.65, fertiliser=1.0.



HIGH CAPACITY FANS

Push large product rates with the new 22" diameter fans and the AirGuard blockage prevention system. Now standard on lower fertiliser runs.

FAST, CONVENIENT ADJUSTMENTS

Morris uses a common metering wheel in each metering body. A single lever adjusts seed plate clearance when metering different products.

Light Up the Night.

25000 lumen light system makes operation at night easy. Lights are located inside tanks, on walkways, under tanks as well lights to illuminate the seeding bar.





EFFICIENT & CAMERA-READY TANKS

The 10 Series tanks have large top lids for highly efficient filling and steep angles on the tanks for improved emptying. All tanks come with camera mounting brackets and self-sealing grommets for optional camera cables.

REDUCED FOOTPRINT

Reduce soil compaction and get stuck less with larger tyres and rims.



Next Generation Sectional Control.

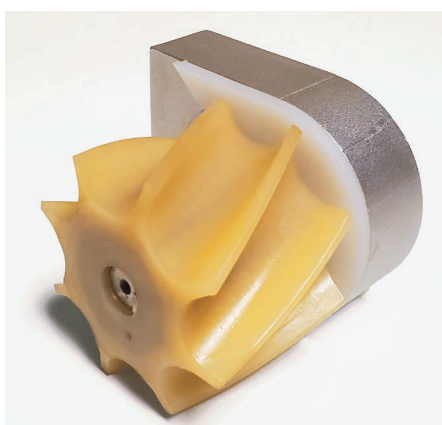
ELECTRIC-DRIVEN METERING

All new metering system driven by 24 V brushless motors with infinitely adjustable rates.



SEED METER GEAR BOX

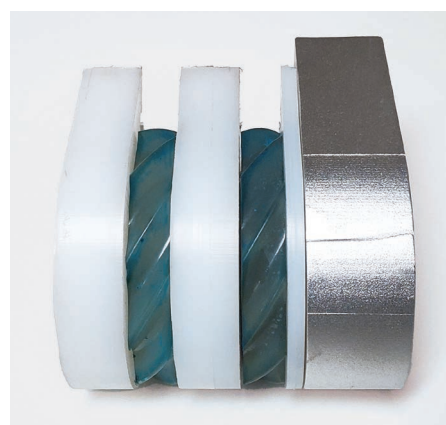
A 40:1 worm drive gear box with sealed housing and stainless steel output shaft connects the electric motor to the metering wheel.



SPIRAL FLUTED METERING WHEEL

The spiral fluted metering wheel is a Morris staple – its continuous flow of product into the air stream is the gold-standard in metering accuracy.

Rate range: 20-300 kg/ha



NEW DUAL SPIRAL FLUTED METERING WHEEL

This metering wheel is used in the Optimizer Tank™ (Small Seeds) and delivers outstanding low-rate flow of product into the air stream.

Rate range: 1-50 kg/ha

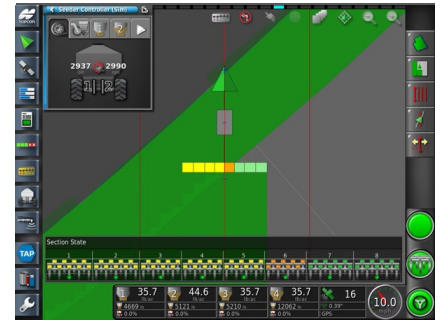
Top Notch Controls.

FULLY AUTOMATED SECTIONAL CONTROL

Topcon's proven fully adjustable and automated sectional control eliminates overlap and seeding misses.

IMPLEMENT COVERAGE SHARING

When seeding in the same paddock with multiple seeding systems, coverage maps are shared between machines so that the sectional control systems prevent seeding over land already planted.



AUTO-PACK

This feature maintains consistent press wheel packing force and optimises opener penetration across variable soil conditions by managing opener hydraulic pressure on Quantum drills equipped with this feature.

AUTO-LIFT

This feature automatically lifts and lowers the Quantum bar on headlands.

● Actual packing force and opener operating pressure ● Lift control settings and activation status

NEW TOPCON XD+ MONITOR

Optimise workflow with full-feature customisation.

TOPCON AGRICULTURE PLATFORM (TAP)

This subscription-based feature synchronises data effortlessly from in-cab and the office through TAP and works with nearly any data format.



Variable Rate by Section.

Morris' new electric metering system is capable of varying product rates for up to 10 sections.



Quality You Can Rely On.

Premium Finish & Materials.

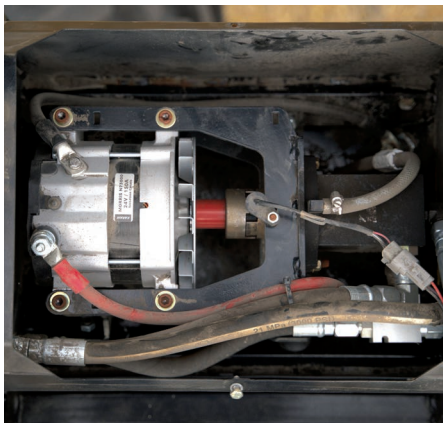
STAINLESS STEEL IN ALL THE RIGHT PLACES

The conveyor top and bottom, metering bodies, collector bodies, primary pipes and quick-access doors are all made from high-grade stainless steel.

POWDER COAT PAINT

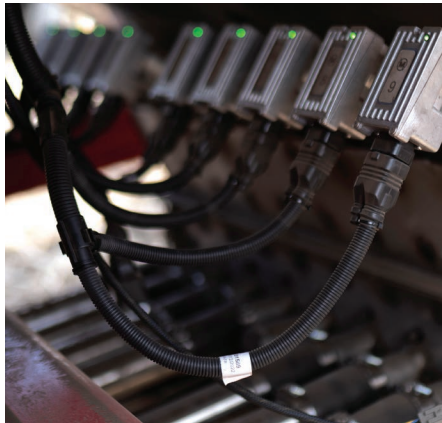
We use a premium UV-resistant powder coat paint to keep the 10 Series air cart looking great for years.

Premium Componentry



ALTERNATOR

A hydraulically driven 150 amp, 24 V brushless alternator sends power to the metering system.



MILITARY-GRADE HARNESS CONNECTIONS

Superior connections make electrical systems more reliable.



24 V ELECTRIC MOTORS

Morris selected an over-built, maintenance-free brushless electric motor with 3x the power of other manufacturers so when you are working hard, the motors will be hardly working.

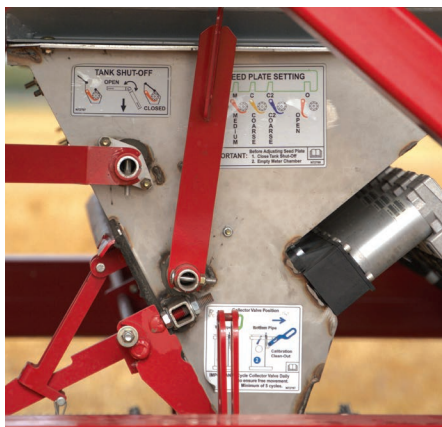


Premium Experience



IMPROVED STAIRS

The flip-up bottom step with gas shock reduces the potential for damage and provides superior ergonomics.



CONVENIENT ADJUSTMENTS

All settings are done from the left-hand side. This includes calibration, adjusting seed plates and double shoot collectors as well as the easy new tank shut-off gates.



XTEND CONVENIENCE FEATURE

This app eliminates going back and forth between the air cart and tractor cab when doing rate calibrations.

Fully integrated liquid

The Morris 10 series range includes models with fully integrated liquid tanks, made from high-grade stainless steel, designed and manufactured in Australia.

Liquid models are combined with either 2 or 3-tank granular combination air carts.

LIQUID DELIVERY SYSTEM: FURROW MANAGEMENT

The Furrow Management system is designed for precise, even and accurate in-furrow delivery of single and dual (optional) liquid applications.

The hydraulically-driven Hypro liquid pump delivers 356 l/min product flow. Agitation is now standard.

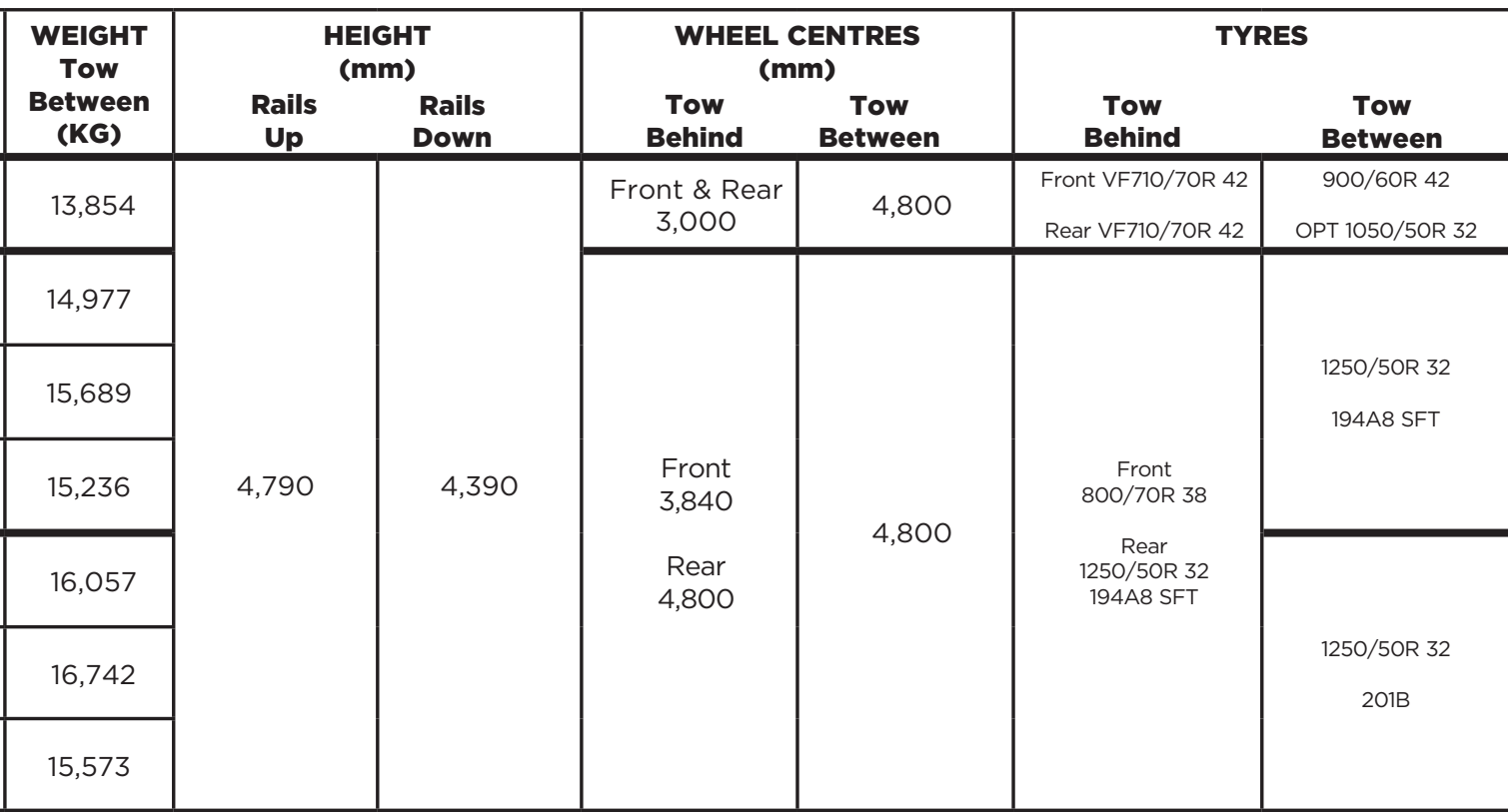


Furrow Management offers direct regulation, allowing for separate pressure and flow between delivery and agitation circuits.

This means that high pressure can be applied to the agitation circuit whilst simultaneously allowing low pressure to be applied to liquid distribution systems on the bar.

A full liquid kit including manifolds, friction tubing, mounting brackets and delivery to the boot can also be supplied.

MODEL	FRAME SIZE	TOTAL CAPACITY (L)	Tank 1 (L)	Tank 2 (L)	GRANULAR Tank 3 (L)	LIQUID Tank 3 (L)	Tank 4 (L)	WEIGHT Tow Behind (KG)
10-590G	REGULAR	20,791	2,114	7,048	4,581		7,048	15,325
10-500L	LARGE	24,118		8,809		6,800	8,809	17,840
10-580L		26,937	2,819	8,809		6,800	8,809	18,552
10-755G		26,603	2,819	8,809	6,166		8,809	18,338
10-660L	X-LARGE	31,756		11,628		8,500	11,628	18,751
10-740L		34,575	2,819	11,628		8,500	11,628	19,436
10-970G		34,103	2,819	11,628	8,028		11,628	18,267





10 SERIES AIR CARTS

SPECIFICATIONS

Hydraulic System Fan Hydraulic Fan Motor(s) Aux Power Unit (APU) Total Max Hydraulic Requirements"	22" (58 cm) Diameter Impeller (5000 RPM Max) 19cc (95 l/min) at 3,100 psi (21,374 kPa) Dual fans require 190 l/min 6.3cc (28 l/min) 220 l/min (excludes bar and liquid requirements)
Product Conveyance Convey-All Conveyor Hydraulic Requirement	35' x 10" Tube x 16" Belt 3,800 l/min (wheat) 80 l/min (flow controlled)
Meter System Meter Drive Primary Air System Meter Rate Range Same Side Adjustment of Seed Plates, Tank Shut-offs, Double Shoot Collectors and Quick Access Doors	24v Brushless Electric Motors 180w 10 Run/2.5" Dia Stainless Steel Tank 1: Low 1-50 kg/ha Tanks 2-4: Standard 20-300 kg/ha Standard
Runs Number Primary Runs - single / double Number Secondary Runs - single / double	6-10 / 12-20 35-100 / 70-200
Liquid Total pump output Hydraulic oil requirements Product tanks	356 L 23 l/min Fully integrated stainless steel
Electrical System 24v Brushless Alternator 24v/12v Equaliser System Sealed ECU and Battery Modules Military Grade Harness Connectors Undertank/Intank/Walkway/Conveyor Lighting Tool Bar Lighting	150A 24v-150A/12v-40A Standard Standard 12K Lumens 16K Lumens
Controls Display Monitor Automated Sectional Control Variable Rate by Section Weights Scales Auto-Lift Auto-Pack Xtend Implement-Implement Coverage Topcon Agricultural Platform (TAP)	Topcon XD+ Console Fully adjustable sectional timing Automated rate control for each 2-3m section Individual granular tanks on load cells Automatically lifts/lowers bar on headlands Consistent packing & placement throughout paddocks This app remotely connects to the Topcon XD+ monitor Shares maps between seeding systems Data management service that simplifies data transfer between the field and the office

We grow
better crops



MORRIS  SUPERIOR FARMS

DISTRIBUTED IN AUSTRALIA BY MCINTOSH DISTRIBUTION

WWW.MCINTOSH DISTRIBUTION.COM.AU

The policy of MORRIS EQUIPMENT LTD. is one of continuing improvement. Therefore, the company reserves the right to change any specification without notice.

Photos are for illustration purposes only.