

**MORRIS**

**C3**

**80 & 90 FT  
CONTOUR**



**80 & 90 FOOT  
INDEPENDENT  
OPENER**

[morris-industries.com](http://morris-industries.com)



**80 & 90FT C3 CONTOUR CONTINUES TO SHED TRASH**  
**The market leading trash flow characteristics of the C3 Contour and the Quantum have been adapted from the C2 Contour, the best trash flow design in the industry.**  
 The success of this design comes from maximising the lowest catch point on the opener and reclining the opener shank 12 degrees. This design allows you to plant into taller stubble and create a more fluid flow of crop residue around the opener and shank.  
 Eliminating bunching and piles of crop residue collecting on the shank of the opener is important during shallow seeding. These residue bunches interfere with the flow of soil around the opener and filling the furrow before packing, resulting in uncovered seed and uneven germination.

## PROVEN RELIABILITY MEETS SUPERIOR DEVELOPMENT

The C2 Contour was renowned for its simple operation, superior trash flow and agronomic success. The Quantum release demonstrated superior digging ability and continued depth control and accuracy. Morris developed the C3 Contour for large scale producers who prefer an 80 or 90ft bar option, combining the simplicity, performance & reliability of the Morris C2 and Quantum bars.

- KEY FEATURES:**
- Upgraded frame
  - Upgraded Quantum openers
  - Auto-Pack ready
  - Stainless Steel upright Air Kits
  - Floatation lug tyres
  - Live hydraulics
  - Auto-Lift ready

### INCREASED DEPTH RANGE

**The C3 Contour opener cam-and-pin is the same proven system utilised on the Quantum.**



The notched cam-and-pin system adjusts depth at 6mm intervals. Rotate the cam by hand and insert the pin to lock in the desired seeding depth.  
 The C3 Contour row unit features a depth shim system to allow for deeper digging and/or seeding.  
 There is a removable shim under the depth cam and removing the shim results in an increase of 25mm seeding depth.



### FLOATATION LUG TYRES

Standard on all C3 bars, the flattened 'V' pattern on the lug tyre minimises compaction and sealing in susceptible soils whilst providing superior floatation.



### UPGRADED ROW UNIT FEATURES

The shank holder has been extended to improve the trip action for faster release off rocks.



The linkage pivots are all 1" chrome pins inside hardened plastic bushings that eliminate steel on steel wear and negate the need for greasing.



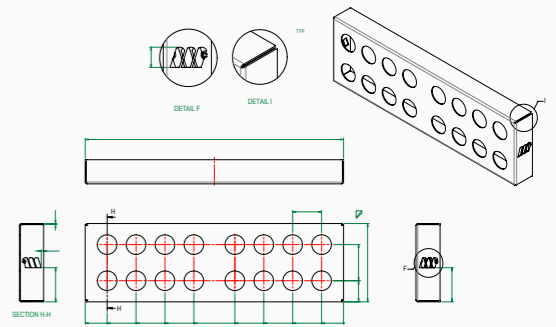
An enclosed shield and seal protects the hub bearings from mud and debris.

A double acting hydraulic cylinder raises and lowers the opener from working to transport position.

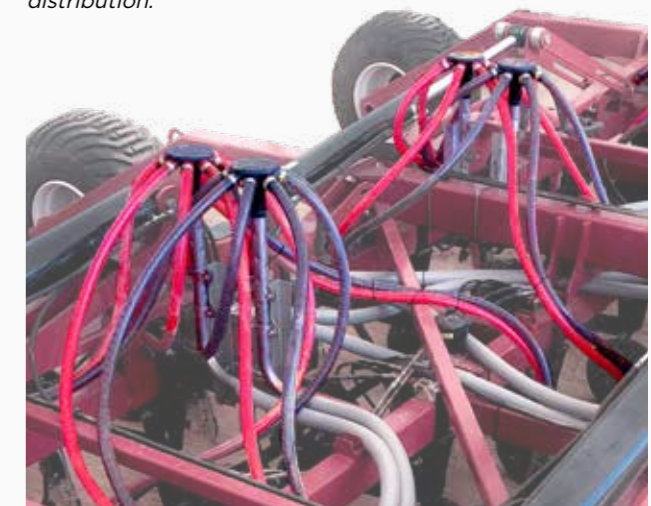
### UPRIGHT AIR KITS

Standard on all C3 bars, the Australian designed and manufactured upright Air Kit is available for owners who prefer this style of air distribution.

Stainless steel construction ensures long life and consistent product delivery.



*Designed and engineered in Australia by McIntosh Distribution, upright Air Kits provide an alternative for owners who prefer this style of air distribution.*



### ACTIVE OPENER HYDRAULICS

The C3 Contour uses the same proven active hydraulic system developed for the Quantum to control opener pressure. It features a reducing system to minimise hydraulic flow requirements during operation.

The new JEM controller has several user-friendly options such as single touch opener lift and lower as well as being able to adjust the opener pressure from the tractor.

This new hydraulic system is also compatible with the Topcon X35 control system which adds **Auto-Lift**, a feature that automatically lifts and lowers openers at headlands and **Auto-Pack**, a system that allows the user to automatically maintain opener packing force on the X35 monitor.



## What is Auto-Pack or variable pressure packing and why is it important?

Correct packing pressure is critical for effective soil-seed contact and establishing capillary action to draw moisture from lower in the soil profile up to the seed bed. Different packing pressures are required in different soil conditions to achieve this.

TOO MUCH packing pressure in dry sands or wet clays can result in surface sealing, inhibiting germination.

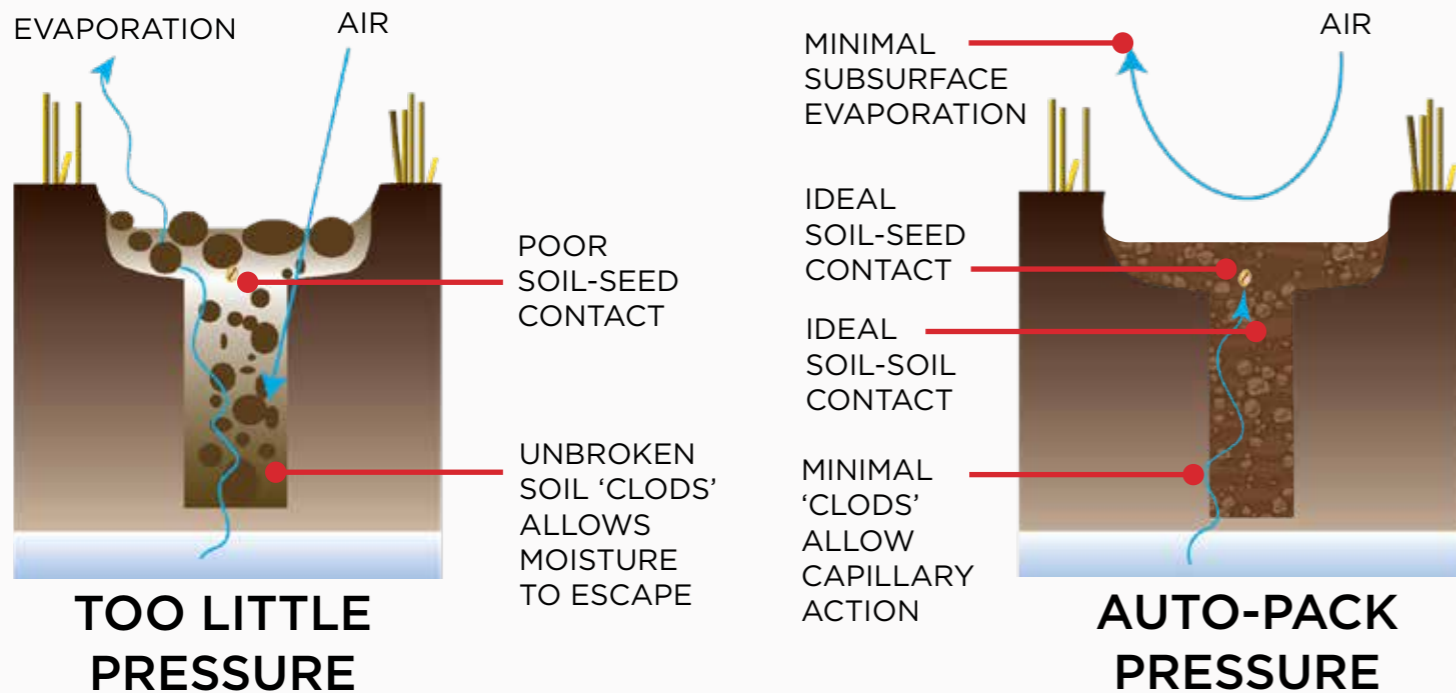
TOO LITTLE packing pressure in dry clays or loams will not press out the "clods" sufficiently to close the furrow, exposing the available soil moisture to evaporation. Not pressing out the "clods" also reduces soil-seed contact and inhibits the establishment of capillary action.

**This is where the Morris Auto-Pack function excels.**

To meet varying pressure requirements and achieve ideal packing, Auto-Pack allows the operator to set the desired packing pressure on the press wheel.

Auto-Pack will then maintain that desired pressure constantly by varying the hydraulic pressure on the opener assembly as conditions change across the paddock.

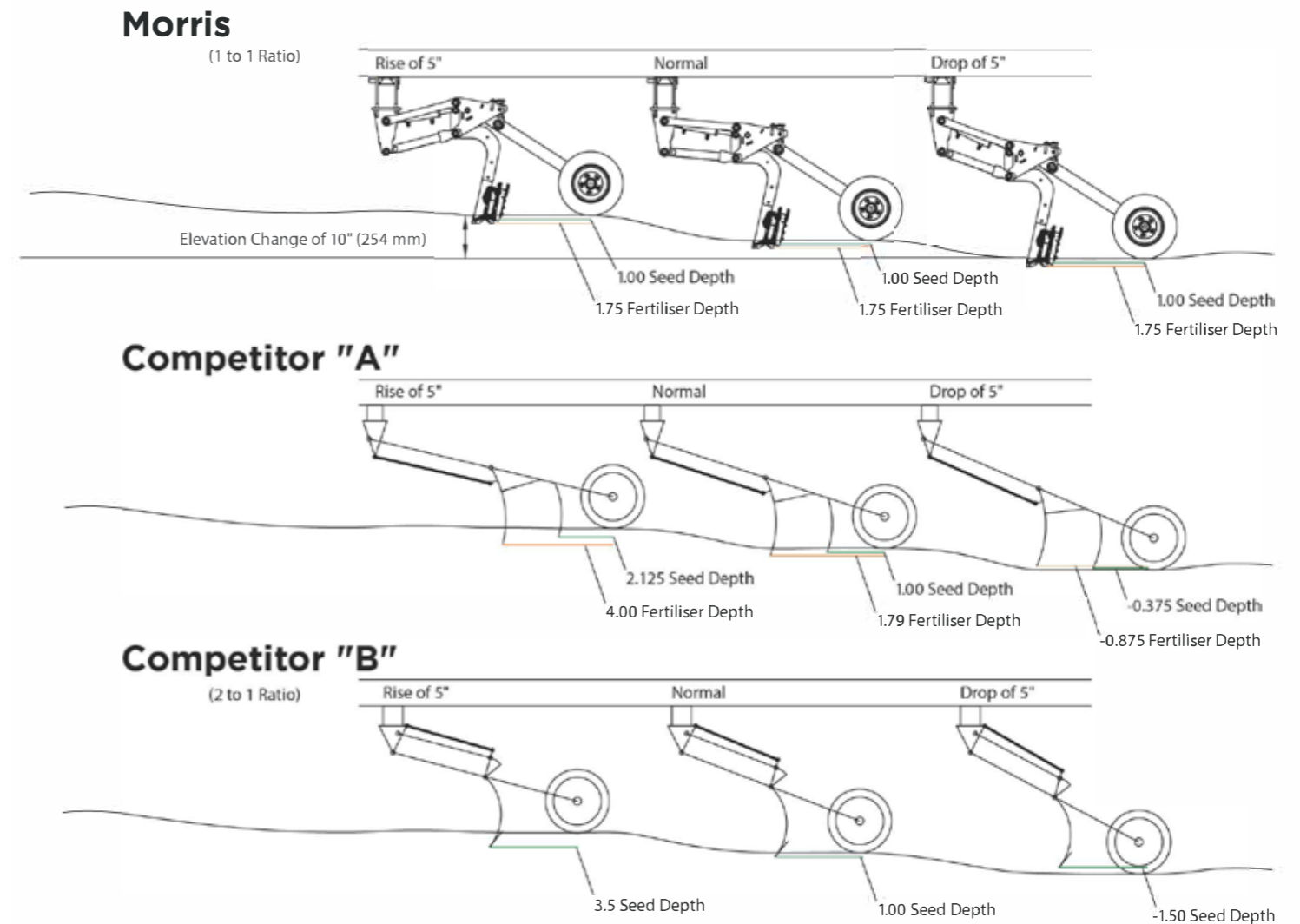
The resulting correctly closed and packed furrows reduce the risk of the available moisture bank evaporating. This creates the ideal seed environment for seed germination.



## RAPID, UNIFORM CROP EMERGENCE is the hallmark of well-designed seeding equipment.

And it's the first and most important step in maximising yield potential. Poorly established paddocks never achieve their full yield potential.

Consistent depth control, seed and fertiliser separation and soil-seed contact are the dominant factors that influence rapid uniform crop emergence and maximise seed germination.



### Depth Control

The C3 Contour and Quantum row unit utilise parallel linkage with a 1:1 opener to packer ratio. Morris was the first company to introduce a parallel link independent opener with a 1:1 opener to packer movement. This superior design results in the most precise depth control and ground following among independent opener drills.

### How It Works

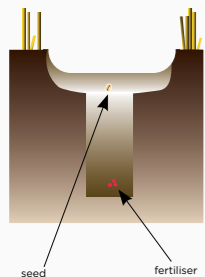
The packer tyre regulates the working depth that the opener moves through the soil. The parallel linkage feature ensures that the depth control and the seed opener angle of entry into the soil is exact over a range of travel of 16". The practical significance of this during field operation is the opener will not carve deeper when travelling over the crowns of hills and is much less prone to losing seed placement when running through shallow depressions like crab holes.

## PACKER WHEEL OPTIONS

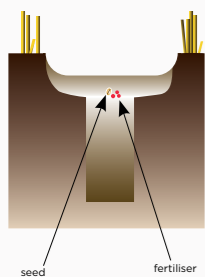
- 4.50" x 16" Semi-Pneumatic Otico tyre
- 4.80" x 16" Semi-Pneumatic tyre
- 5.50" x 16" Semi-Pneumatic tyre



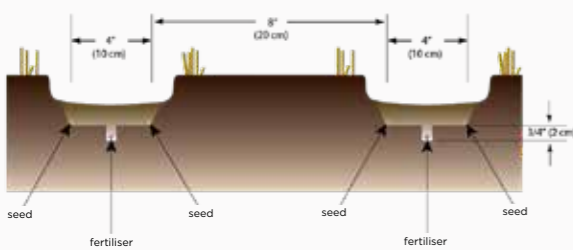
## OPENER OPTIONS



The **in-line dual shoot opener** places fertiliser below the seed and leaves a narrow trench to maximise water harvesting. This option also has the greatest potential to utilise sub soil moisture through capillary action. The in-line opener is available to use with all spacing options and is the most durable in rocky conditions.



The **narrow knife single-shoot opener** is a single-shoot opener that places a narrow 125 mm (5") ribbon of seed in each seed row. This opener cuts a smooth narrow channel for seed to be placed, and has the lowest soil disturbance of the openers available. This opener has proven to be a popular choice with growers with sticky, high clay content soils.



The **patented paired row double-shoot opener** places two distinct rows of seeds 100 mm (4") apart with fertiliser placed centrally and 20 mm (3/4") below the seed rows. The 300 mm (12") shank spacing, paired row opener combination provides a 200 mm (8") seed row spacing. Narrow row spacing closes the crop canopy more rapidly setting the stage for improved sunlight capture, water use efficiency and crop competition. Angled carbide faces on the opener minimise soil fracturing for excellent seed bed consistency and outstanding seed to fertiliser separation. This opener is only available on 12" spacings and is particularly suitable for non-wetting sands.

## LIQUID OPTION

A full liquid kit including manifolds, friction tubing/line meter, mounting brackets and delivery to the boot can be supplied.

All final delivery liquid hoses contain a non-drip valve to prevent liquid fertiliser leaking into the frame during folding.

This non-drip valve is rigidly mounted to the frame with a stainless steel metal bracket and U-bolt to prevent corrosion and to make it easier to change the friction tube and line meters.

Years of testing and development has led to a well-refined, simple and effective liquid kit.



BASE SIZE	5 FRAME MODELS		
	80'	90'	
<b>WEIGHT</b>	12" Spacing	17,700 kg	20,000 kg
	15" Spacing	16,600 kg	18,800 kg
<b>WORKING WIDTH</b>	12" Spacing	24.38 m	27.43 m
	15" Spacing	24.38 m	27.43 m
<b>NUMBER OF SHANKS</b>	12" Spacing	80	90
	15" Spacing	64	72
<b>FRAME WIDTH</b>	Main	6.40 m	6.40 m
	Wing Inner	4.57 m	4.57 m
	Wing Outer	4.40 m	4.40 m
<b>TRANSPORT POSITION</b>	Width	7.62 m	7.62 m
	Height	5.51 m	5.51 m
	Length	10.62 m	10.62 m
<b>TYRES</b>	Main Frame Wheels	(8) 400/55 - 22.5 Trelleborg	(8) 400/55 - 22.5 Trelleborg
	Wing Frame	Dual Castor	Dual Castor
	Front Castor Wheels	(8) 400/60 - 15.5 Trelleborg	(8) 400/60 - 15.5 Trelleborg
	Wing Frame	(2 per wing)	(2 per wing)
	Rear Wheels	(8) 400/60 - 15.5 Trelleborg	(8) 400/60 - 15.5 Trelleborg
<b>OPENER</b>	Trip Out Force	Maximum 360 kg (800 lbs) at 1200 psi (8274 kPa)	
	Packing Force	35 kg - 90 kg (80 lbs - 200 lbs)	
	Packer Wheel	115 mm x 400 mm (4.50" x 16") Semi Pneumatic Otico Tyre 120 mm x 400 mm (4.80" x 16") Semi-Pneumatic 140mm x 400 mm (5.50" x 16") Semi-Pneumatic	
<b>MAXIMUM AIR CART TOWING CAPACITY</b>	Tow Behind	25,000 L	
	Tow Between	No restrictions	
<b>OPENER TO GROUND CLEARANCE</b>	305 mm (12")		
<b>FRAME TO GROUND CLEARANCE</b>	810 mm (32")		
<b>FRAME DEPTH</b>	2.40 m centre to centre		
<b>RANK TO RANK SPACING</b>	1.20 m centre to centre		
<b>NUMBER OF RANKS</b>	3 Rows		
<b>SHANK TO SHANK SPACING</b>	12" Spacing	914 mm (36")	
	15" Spacing	1,143 mm (45")	
<b>WEIGHT KIT</b>	Optional - Recommended for difficult digging conditions and undulating country		
<b>SAFETY LIGHTS</b>	Standard		

# MORRIS

**CORPORATE OFFICE & TRAINING CENTRE**  
**2131 Airport Drive, Saskatoon, SK Canada S7L 7E1**  
**Tel: 306.933.8585 Fax: 306.933.8626**  
**Questions? email: [info@morris-industries.com](mailto:info@morris-industries.com)**  
**[www.morris-industries.com](http://www.morris-industries.com)**

The policy of MORRIS INDUSTRIES LTD. is one of continuing improvement; therefore, the company reserves the right to change any specification without notice.