



<b>Engine</b>	Cummins L9
<b>Gross Power</b>	203 kW (272 hp / 276 ps) @ 2,000 rpm
<b>Net Power</b>	185 kW (248 hp / 252 ps) @ 2,000 rpm
<b>Blade Capacity</b>	7.8 m <sup>3</sup>
<b>Operating Weight</b>	24,000 kg

# LD26D BULLDOZER

# LD26D SPECIFICATIONS >>>

## ENGINE

Model	Cummins L9
Emission Regulation	Tier 3
Gross Power	203 kW (272 hp / 276 ps) @ 2,000 rpm
Net Power	185 kW (248 hp / 252 ps) @ 2,000 rpm
Peak Torque	1,245 N·m
Number of Cylinders	6
Displacement	8.9 L
Aspiration	Turbocharged

## ELECTRICAL SYSTEM

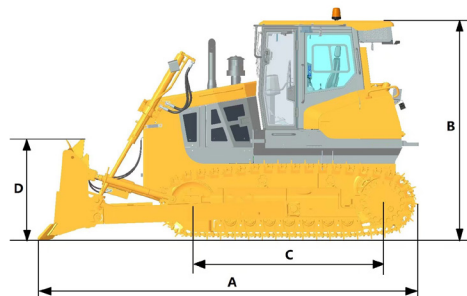
System Voltage	24 V
----------------	------

## TRANSMISSION SYSTEM

Transmission Type	Power Shift
Maximum Travel Speed, fwd	11.8 km/h
Maximum Travel Speed, rev	14.3 km/h
Number of Speeds, fwd	3
Number of Speeds, rev	3

## DIMENSIONS

A Overall Length	5,760 mm
B Height to Top of Cab	3,416 mm
C Track Length on Ground	3,050 mm
D Blade Height	1,435 mm
E Blade Width	3,725 mm
F Width over Track	2,540 mm
G Track Gauge	2,000 mm



## UNDERCARRIAGE

Shoe Width	560 mm
Number of Shoes Per Side	41
Number of Upper Rollers per Side	2
Number of Bottom Rollers per Side	2
Shoe Ground Pressure	61 kPa
Track on Ground	3,050 mm

## BLADE PERFORMANCE

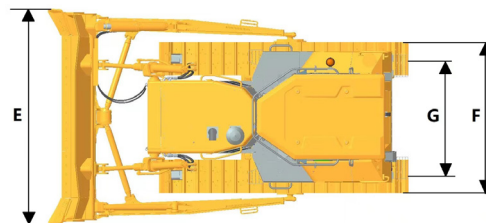
Blade Type (referenced)	Straight
Blade Capacity (referenced)	7.8 m³
Blade Width	3,725 mm
Blade Height	1,435 mm
Blade Depth below Ground	540 mm
Blade Lift above Ground	1,210 mm
Blade Tilt	735 mm

## OPERATING WEIGHTS

Operating Weight	24,000 kg
------------------	-----------

## SERVICE CAPACITIES

Fuel Tank	485 L
Engine Oil	24 L
Cooling System	35 L
Hydraulic System Total	158 L
Transmission and Torque Converter	173 L
Final Drives, Each	38 L



Guangxi Liugong Machinery Co., Ltd.

No. 1 Liutai Road, Liuzhou, Guangxi 545007, PR China  
T: +86 772 3886124 E: overseas@liugong.com  
www.liugong.com

Specifications and designs are subject to change without notice. Machines shown may include optional equipment. Liugong standard and optional equipment may vary from region to region. Please consult your Liugong dealer for information specific to your area. Engine power kW is converted to horsepower (1 kW=1.3596 ps and 1 kW=1.3410 hp) in this file.

12/2023 Designed by LiuGong